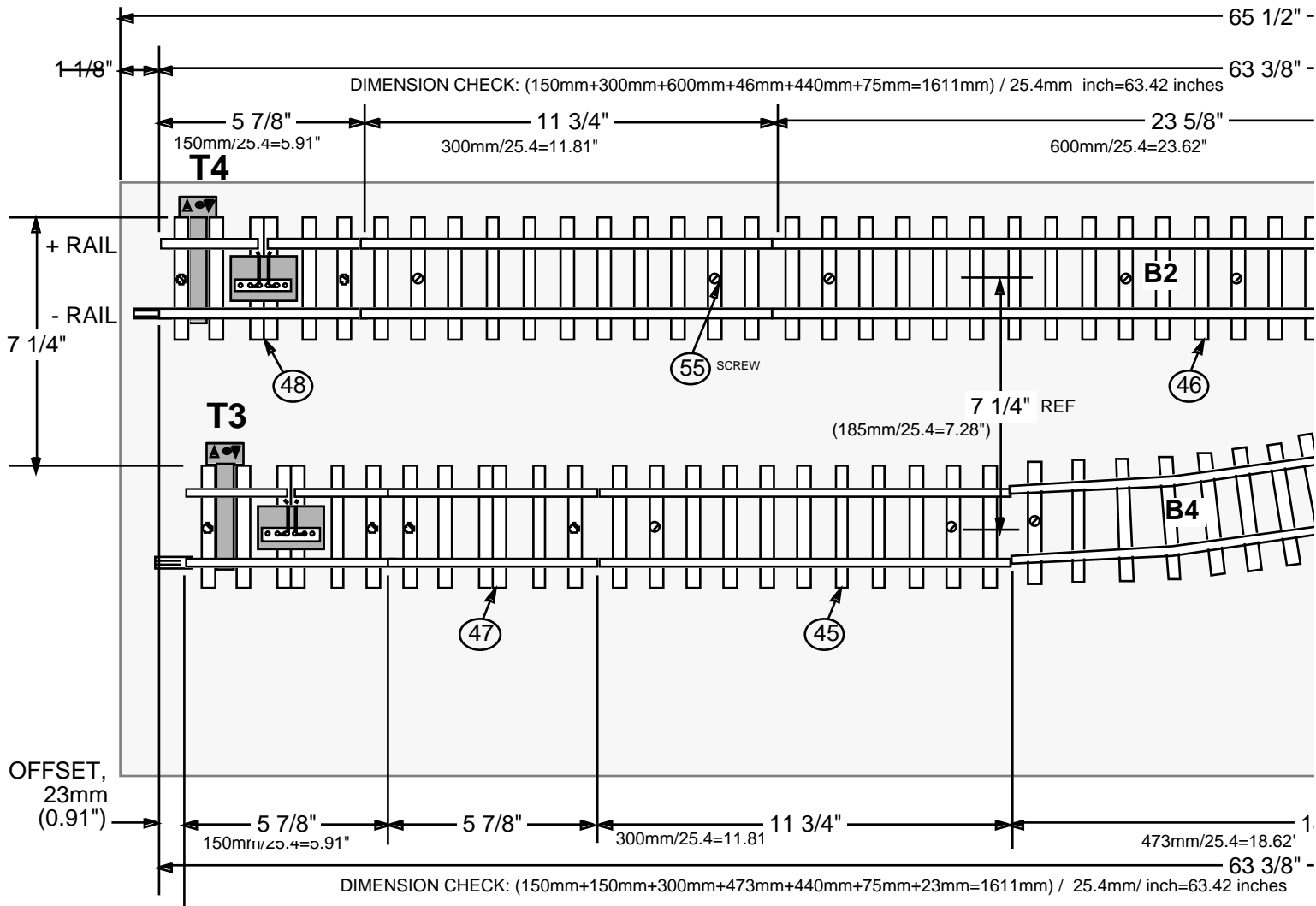
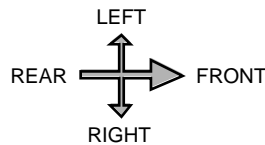


**FIG 4c—23mm OFFSET
CAUSED BY SWITCH**

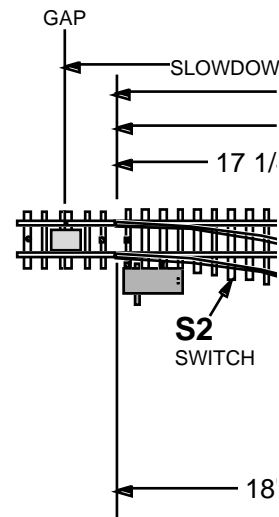
23 mm
OFFSET



Summary: This sheet shows the track layout dimensions for a portable, modular unit. (Use Sheet 14 instead of this sheet if you want to build the trackwork for a permanent layout.)



ALL GAPS ARE IN THE LEFT (+) RAIL → + RAIL
RIGHT (-) RAIL HAS NO GAPS → - RAIL

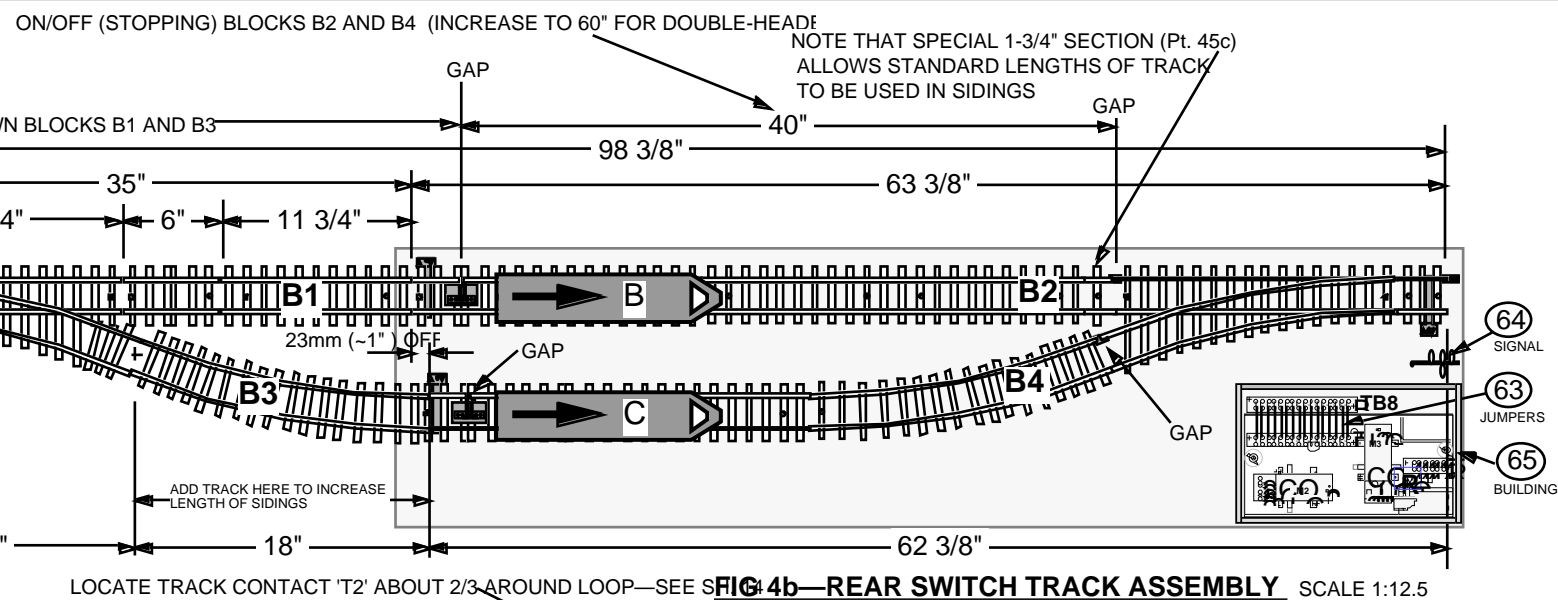
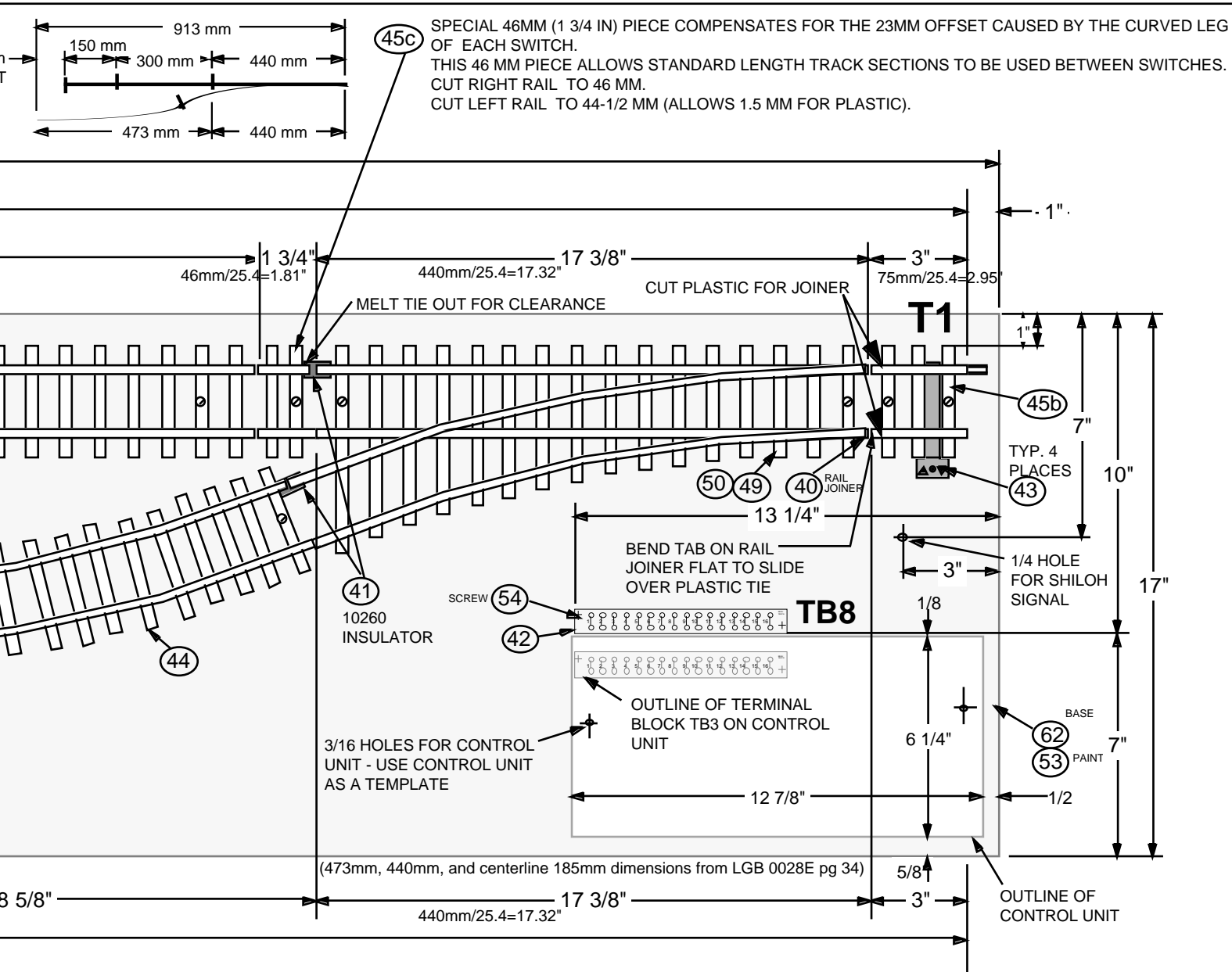


DRILL & SCREW SIZES:

- 5/64 — PILOT HOLES IN WOOD
- 7/64 — PILOT HOLES IN TIES
- 9/64 — HOLES FOR WIRES
- 3/16 — 2 HOLES FOR #8 x 1-1/4 WING NUTS
- 1/4 — 1 HOLE FOR SEARCHLIGHT SIGNAL
- #4 x 1/2" LG. SCREW FOR TERMINAL BLOCKS
- #4 x 5/8" LG. SCREW FOR TIES

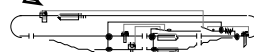
NOTES:

- SEE 8-1/2 x 11 PUBLICATION P165 FOR STEP-BY-STEP ASSY. INSTRUCTIONS
- PARTS LIST IS ON SHEET 8.
- CLEARANCE FROM CENTERLINE OF TRACK TO NEAREST OBSTACLE SHOULD BE 3-1/2" MINIMUM.
- CUT WIRE CONNECTORS FROM TRACK UNIT TO CONTROL UNIT TO BE 3" LONG.



JAMES R. INGRAM
303-798-1968

7931 SO. BROADWAY, STE. 331
LITTLETON CO 80122-2710



Ingram Autocontrols

TITLE MODEL 165 AUTOMATIC SWITCHING BLOCK

DWG SERIES

ORIG 05MAR94

REV G, 01SEP95

D8811-165

TRACK UNIT DIMENSIONS

SH.

4

© 1995 SCALE 1/5"=1" (11"x17") UNLESS NOTED