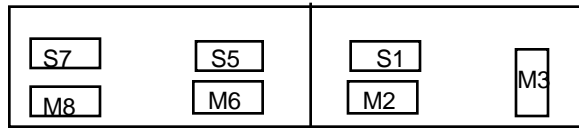


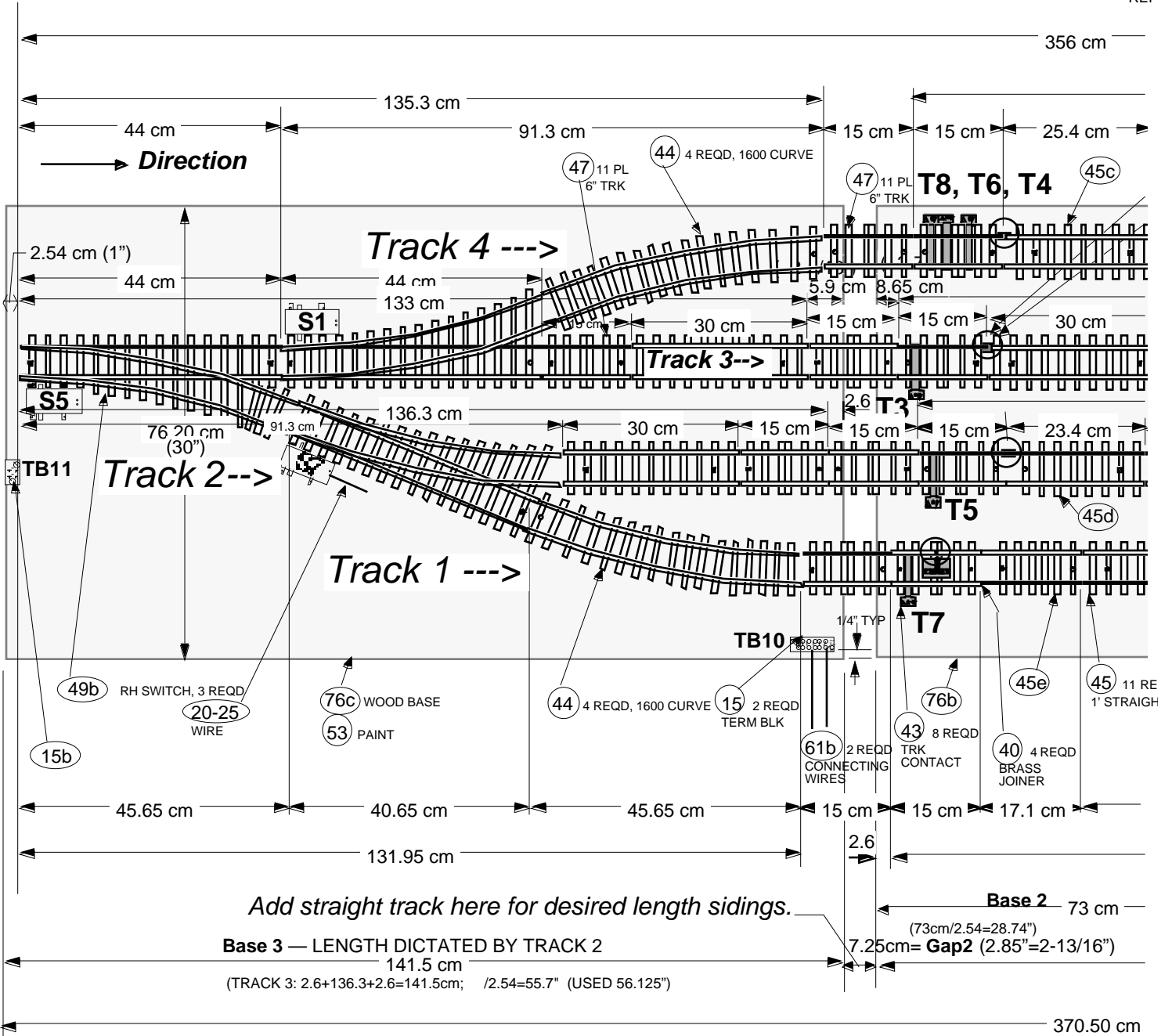
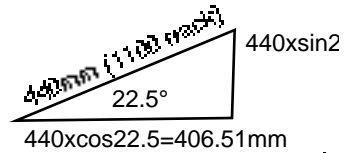
THE ARROWS SHOW DIRECTION THAT TRACK CONTACTS SET THE SWITCHES AND ARMS OF MOTORS. FOR EXAMPLE, TRACK CONTACT "T8" SETS SWITCH "S7" TO ROUTE TRAINS TO THE RIGHT, AND SETS THE ARM OF SWITCH MOTOR "M8" TO THE RIGHT.

TRAINS PROGRESS FROM RIGHT TO LEFT (TRACK 1 TO TRACK 4).

PROGRESSION ↑



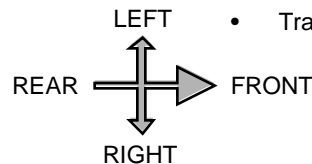
T8=S7,M8↓ T6=S5,M6↓ T4=S1,M2↓ T2=M3→ (GREEN)
 T7=S7,M8↑ T5=S5,M6↑ T3=S1,M2↑ T1=M3← (RED)



Note:

Track Contact Orientation

- Track Contacts Pointing Left
- Track Contacts Pointing Right



REFERENCE DIMENSIONS FOR TRACK LENGTH TABULATIONS

in22.5=168.38mm

BOARD 3 (REAR)

TRACK 4: 44+91.3=135.3 cm

TRACK 3: 44+44+15+30=133 cm

TRACK 2: 91.3+30+15=136.3

TRACK 1: 45.65+40.65+45.65=131.95

BOARDS 1 & 2 (FRONT)

15+25.4+30 [joint 1]+91.3+44=205.7 cm

15+30+30 [joint 1]+30+15+44+44=208 cm

15+23.4+30+30 [joint 1]+15+91.3=204.7 cm

15+17.1+30+15 [joint 1]+45.65+40.65+45.65=209.05 cm

TOTAL REAR & FRONT

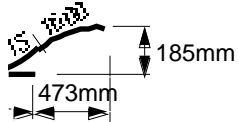
135.3+ [15 [joint 2]] +205.7= 356 cm

133+ [15 [joint 2]] +208= 356 cm

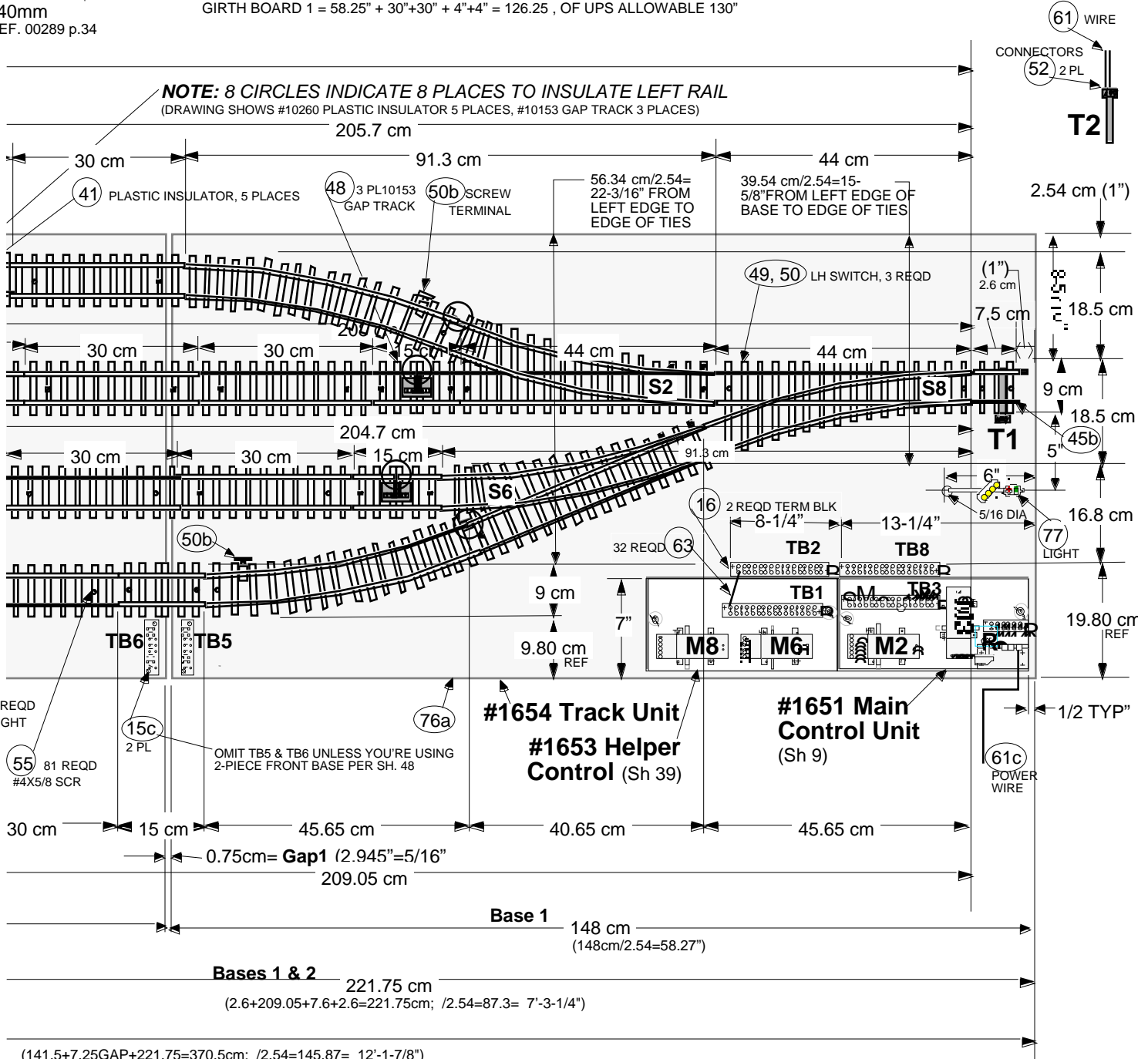
136.3+ [15 [joint 2]] +204.7= 356 cm

131.95+ [15 [joint 2]] +209.05= 356 cm

COMMENT: ABOVE CALCULATIONS DERIVED FROM STARTING WITH TRACK 3 (STRAIGHT TRACK), AND SIZING OTHERS TO FIT.
CONVERSION—METRIC TO US: 2.54 cm = 1 inch
GIRTH BOARD 1 = 58.25" + 30"+30" + 4"+4" = 126.25 , OF UPS ALLOWABLE 130"



40mm
REF. 00289 p.34



Summary: This sheet shows the Phase 3 track layout for 4-track operation.

